

# Fibre Optic Adapter, LC Duplex, Keyed/Non Keyed

Reduced-Flange Mount, Ceramic Sleeve, (OM4+/OM4/OM3/OM2/OM1/OS2), light grey

CORNING

Corning offers a full line of factory- and field-installable adapters in a variety of mounting configurations to ensure compatibility with the housing, panel, outlet or faceplate being utilised. Supporting a variety of connector types, the adapters are ideal for cable assembly house and manufacturing environments and local area networks (LANs) at the workstation outlet.

## Features and Benefits

### Various mounting configurations

Ensures compatibility with housing, panel, or faceplate being utilised

### Variety of colours

Supports TIA/EIA-568-B.3

### Available with or without Corning logo

Allows for customisation

### Available with ceramic or metal alignment

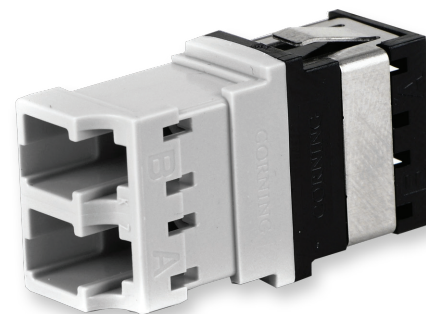
Variety of applications

### Keyed adapters

Front and rear security in network panel

### Twelve color-coded mechanical key positions

Prevents mismatch of networks



Part Number: ADP-KDLC-CCSRF-CLX

## Standards

Approvals and Listings TIA/EIA-604-10

## Specifications

General Specifications	
Product Type	Fibre Optic Adapters
Fibre Category	OM4+/OM4/OM3/OM2/OM1/OS2
Corning Logo	Yes
Packaging	Bulk Pack
Keyed	Yes

# Fibre Optic Adapter, LC Duplex, Keyed/Non Keyed

Reduced-Flange Mount, Ceramic Sleeve, (OM4+/OM4/OM3/OM2/OM1/OS2), light grey

CORNING

## Design Adapter

Adapter Type	LC Duplex
Adapter Style	Keyed-Non Keyed
Adapter Housing Material	Composite
Adapter Housing Colour	Grey
Insert Material	Ceramic
Mounting Type	Reduced Flange
Clip	Metal

## Chemical characteristics

RoHS	Free of hazardous substances according to RoHS 2002/95/EG
------	---

## Ordering Information

Part Number	ADP-KDLC-CCSRF-CLX
Product Description	Fibre Optic Adapter, LC Duplex, Keyed/Non Keyed, Reduced-Flange Mount, Ceramic Sleeve, (OM4+/OM4/OM3/OM2/OM1/OS2), grey

## Shipping Information

Units per Delivery	50/1
--------------------	------



Corning Optical Communications GmbH & Co. KG · Leipziger Strasse 121 · 10117 Berlin, GERMANY  
00 800 2676 4641 · FAX: +49 30 5303 2335 · [www.corning.com/opcomm/emea](http://www.corning.com/opcomm/emea)

A complete listing of the trademarks of Corning Optical Communications is available at [www.corning.com/opcomm/emea/trademarks](http://www.corning.com/opcomm/emea/trademarks). Corning Optical Communications is ISO 9001 and ISO 14001 certified. © 2014 Corning Optical Communications. All rights reserved.