

# Fibre Optic Adapter, SC

single-mode (OS2), blue, flanged with spring plate

CORNING

Corning offers a full line of factory- and field-installable adapters in a variety of mounting configurations to ensure compatibility with the housing, panel, outlet or faceplate being utilised. Supporting a variety of connector types, the adapters are ideal for cable assembly house and manufacturing environments and local area networks (LANs) at the workstation outlet.

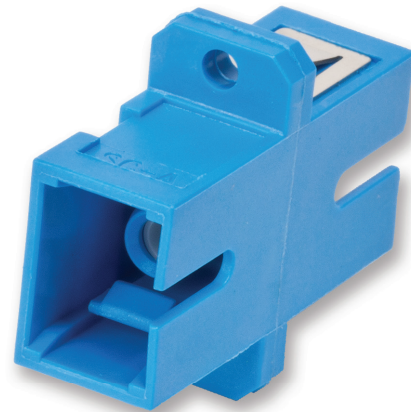
## Features and Benefits

### Variety of colours

Supports TIA/EIA-568-B.3

### Ceramic or metal alignment

Variety of applications



Part Number: ADP-SC00-CCNFL-CLS

## Specifications

### General Specifications

Product type	Fibre Optic Adapters
Fibre Category	single-mode (OS2)
Corning Logo	Yes
Packaging	Bulk Pack

### Design Adapter

Adapter type	SC
Adapter housing material	Composite
Insert Material	Ceramic
Adapter housing colour	Blue
Number of Clips	1
Footprint	Rectangular SC
Adapter style	Standard
Mounting type	Full-flange

# Fibre Optic Adapter, SC

single-mode (OS2), blue, flanged with spring plate

CORNING

## Ordering Information

Part Number	ADP-SC00-CCNFL-CLS
Product Description	Adapter SC, composite housing, ceramic insert, single-mode (OS2), blue, flanged with spring plate
EAN Code	4056418202556

## Shipping Information

Units Per Delivery	50/1
--------------------	------



Corning Optical Communications GmbH & Co. KG · Leipziger Strasse 121 · 10117 Berlin, GERMANY

00 800 2676 4641 · FAX: +49 30 5303 2335 · [www.corning.com/opcomm/emea](http://www.corning.com/opcomm/emea)

A complete listing of the trademarks of Corning Optical Communications is available at [www.corning.com/opcomm/emea/trademarks](http://www.corning.com/opcomm/emea/trademarks). Corning Optical Communications is ISO 9001 and ISO 14001 certified. © 2016 Corning Optical Communications. All rights reserved.