

Data sheet

Modul wall outlet 45x45 2 port unequipped pure white

Page 1/4

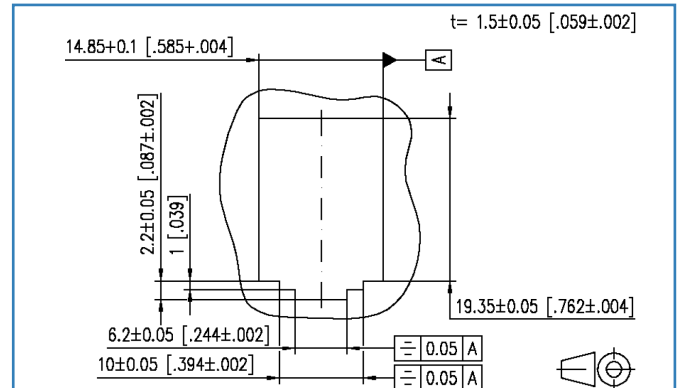
P/N
130915C4502-E
EAN 4250184123897

2017-16-08

Illustrations



Cut-out



See enlarged drawings at the end of document

Product specification

- termination unit for two individual modules in Modul design
- module plug direction approx. 30° downwards
- strain relief on module
- dust protection with shutter
- colored coding of the ports possible (green/blue)
- suitable for cable ducts with 45 snap-lock (4.6 mm detent)
- vertical and horizontal mounting direction
- reference list on request and on the internet under www.metz-connect.com



Modul wall outlet 45x45 2 port unequipped pure white

P/N

130915C4502-E

EAN 4250184123897

2017-16-08

Technical Data

General Data

| | |
|-----------------------|----------------|
| Fields of application | Office |
| Design | Wall outlet |
| Color | pure white |
| Modularity | yes |
| Marking option | by port coding |

Connections/interfaces

| | |
|--------------------------------------|---------------|
| Number of ports interface 2 | 2 |
| Number of ports interface 2 equipped | 0 |
| Module plug-in direction | 30° downwards |

Mechanical characteristics

| | |
|---------------|--------------------|
| Cut-out | Modul |
| strain relief | attached to module |

Materials and material properties

| | |
|----------------------------|-----|
| Material - Cover part(s) | ABS |
| Material - Dust protection | ABS |

Approvals

| | |
|----------------------|--------------|
| RoHS | compliant |
| UL listed (file no.) | DUXR.E178484 |

Classifications

| | |
|----------|----------|
| ETIM 5.0 | EC001264 |
| ETIM 6.0 | EC001264 |

Packing details

| | |
|---------------------------------|----------------------------|
| Type of packaging | 10 pc(s) / box |
| Packaging unit - Weight (gram) | 262.00 g |
| Packaging unit - Weight (pound) | 0.58 lb |
| Packaging dimension (W x H x D) | 195.00 x 170.00 x 68.00 mm |
| Packaging dimension (W x H x D) | 7.677 x 6.693 x 2.677 in. |



Data sheet

Page 3/4

Modul wall outlet 45x45 2 port unequipped pure white

P/N

130915C4502-E

EAN 4250184123897

2017-16-08

Accessories

| P/N | Designation |
|---------------|-----------------------------------|
| 130910R4502-E | Frame 80x80 mm for 45x45 mm white |



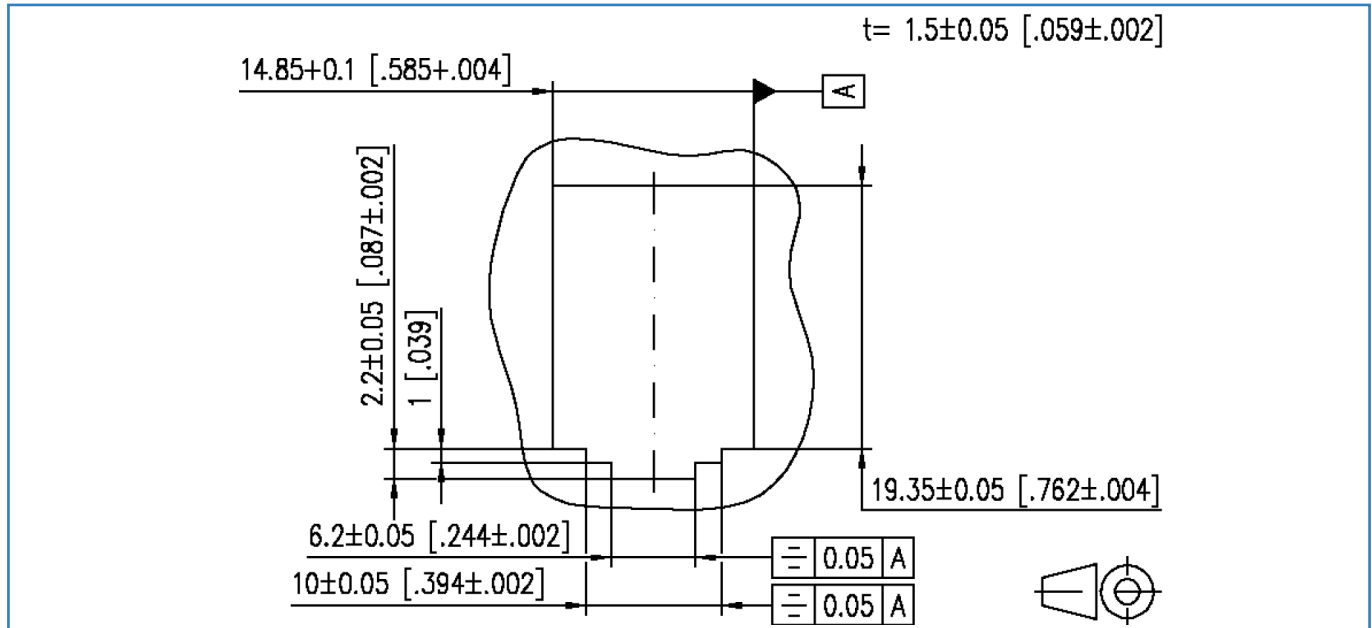
Modul wall outlet 45x45 2 port unequipped pure white

P/N
130915C4502-E
EAN 4250184123897

2017-16-08

Illustrations

Cut-out



© 2017 METZ CONNECT - Technische Änderungen vorbehalten! Subject to modifications! Sous réserve de modifications techniques!