

Data sheet

OpDAT fix patch panel splice 12xLC-D (aqua), OM3, gray

Page 1/5

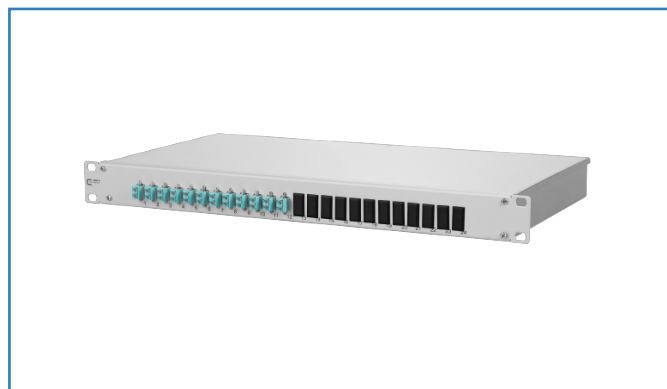
P/N

1502557712-E

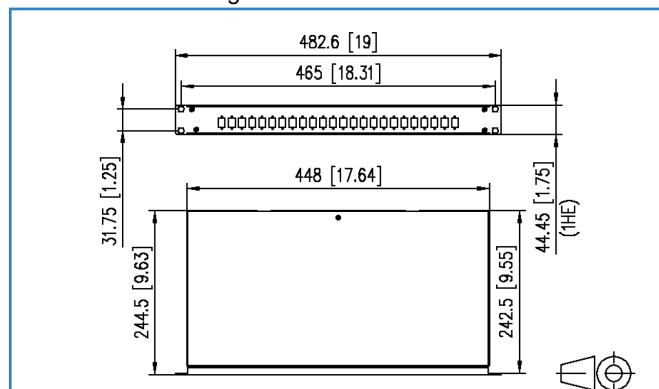
EAN 4250184171997

2018-13-03

Illustrations



Dimensional drawing



See enlarged drawings at the end of document

Product specification

- 19 inch 1RU fiber optic patch panel for fixed installation
- equipped with LC-D adapters and LC pigtailed
- pigtailed with semi-tight buffered fiber dia. 0.9 mm, 12 colors, secondary and primary coating in the same color, length 2.0 m
- pigtailed inserted and stripped in standard splice trays with crimp splice holders
- pigtailed are cleaned and plugged in adapters
- light aluminum construction with steel sheet front plate painted (gray or black)
- unused cutouts are closed by blank plugs
- removable front plate for easy adapter mounting
- screwed on cover for easy access during service work
- several possibilities for cable entry on the back (fastening with PG13.5, PG16 and PG21 or M20 and M25)
- supplied with one PG16 cable gland
- Variants: equipped with 6, 12 or 24 LC-D adapters and pigtailed, all blue (OS2), lime green (OM5), violet (OM4), aqua (OM3) or 6, 12 or 24 LC-D APC adapters and pigtailed, all green (OS2)



Data sheet

Page 2/5

OpDAT fix patch panel splice 12xLC-D (aqua), OM3, gray

P/N

1502557712-E

EAN 4250184171997

2018-13-03

Technical Data

General Data

Fields of application	Structured building cabling, Office Data center
Design	patch panel
Mounting style	1RU
Transmission technology	Fiber optic
Port numbering	yes
Color	aqua
Dimensions	
Dimension (L x W x H)	244.50 x 482.60 x 44.45 mm
Dimension (L x W x H)	9.626 x 19.00 x 1.75 in.
Inches	19 inches
Height unit	1RU
Number of cables/ cores	24
Cable Type	pigtail(s)
Fiber class	OM3: ISO/IEC 11801/EN 50173 & IEC 60793-2-10/EN 60793-2-10 A1.a.2
Mode type of the fiber	Multimode
Fiber construction	50/125 µm
Labeling option	printed numbers

Connections/interfaces

Connector technology interface 1	LC-D Couplers
Connector technology interface 2	LC-D Couplers
Number of ports interface 1	24
Number of ports interface 2	24
Number of equipped ports interface 1	12
Number of equipped ports interface 2	12
Number of ports with dust protection interface 2	12
Number of blind covers interface 2	12
Semi-tight buffered fiber pigtail length	2.00 m
Semi-tight buffered fiber pigtail length	6.56 ft
Semi-tight buffered fiber pigtail diameter	0.90 mm
Semi-tight buffered fiber pigtail diameter	0.035 in.
Cable access/outlet	several possibilities for cable entry on the back



Data sheet

Page 3/5

OpDAT fix patch panel splice 12xLC-D (aqua), OM3, gray

P/N

1502557712-E

EAN 4250184171997

2018-13-03

Technical Data

Optical characteristics

Insertion loss	max. 0.4 dB
Return loss	min. 35 dB

Mechanical characteristics

Cut-out	SC, LC-D, E2000
Connector type	Duplex
Life - Number of mating cycles	min. 1000
strain relief	yes

Materials and material properties

Material - Housing	Al (Aluminium)
Material - Front cover	sheet steel
Material - Sleeve	ceramic, slotted
Material - Coupler housing	Plastics

Approvals

RoHS	compliant
------	-----------

The product meets the following standards

Fibre optic connector interfaces	DIN EN 61754-20
Optical fibers: Product specifications	
Sectional specification for category A1 multimode fibres	ISO/IEC 60793-2-10 (A1a.2)
Optical fibers - Interconnecting devices and passive components - basic test and measuring methods	
Fibre optic interconnecting devices and passive components	IEC 61300-3-4
Fibre optic interconnecting devices and passive components	IEC 61300-3-6
Fibre optic interconnecting devices and passive components	IEC 61300-3-35
Standard colours for insulation for low-frequency cables & wires	IEC 60304



Data sheet

Page 4/5

**OpDAT fix patch panel splice
12xLC-D (aqua), OM3, gray**

P/N

1502557712-E

EAN 4250184171997

2018-13-03

Technical Data**Classifications**

ETIM 5.0	EC001130
ETIM 6.0	EC001130

Packing details

Type of packaging	1 pc(s) / box
Packaging unit - Weight (gram)	1790.00 g
Packaging unit - Weight (pound)	3.95 lb
Packaging dimension (W x H x D)	523.00 x 361.00 x 45.00 mm
Packaging dimension (W x H x D)	20.591 x 14.213 x 1.772 in.



Data sheet

**OpDAT fix patch panel splice
12xLC-D (aqua), OM3, gray**

Page 5/5

P/N

1502557712-E

EAN 4250184171997

2018-13-03

Illustrations

Dimensional drawing

