

LANS Housing, partially loaded, without pigtails, LC Duplex

48 fibres, 1U, single-mode (SM), black

CORNING

The modular and multifunctional LANS housing family was designed for various applications in 19-in racks and main distribution frames. The sliding and tilting LANscape® LANS housings can be equipped with industry common adapter types in different fibre categories and are suitable for direct field termination, fusion splicing with pigtails as well as preterminated solutions. The modular front allows for mixed media fibre and copper installations of modules in LANscape format. The two modular back openings can accommodate additional accessories, such as cable glands, cable strain relief for FTDD/FTTO applications or U-Clips for Plug & Play™ and EDGE™ trunks. Enabling a simple exchange of adapter modules during moves, adds and changes (MACs) the modular housings reduce the risk of network disruptions.

Features and Benefits

Modular front allows to exchange and mix different adapter types and fibre categories

LC Duplex adapter modules with selfclosing shutters are standard at no extra cost

Quick-mount feature allows for easy and accurate single-person installation

Modular back openings allow to strainrelief different cable types, such as brackets for cable glands, furcation heads of preterminated cables, copper cables and low fibre count cables (max. 16)

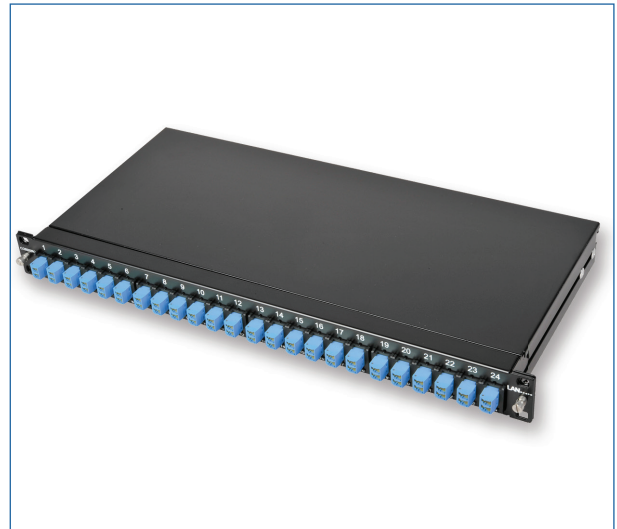
Suitable for fusion splicing with pigtails, preterminated solutions and Plug & Play™ /EDGE™ trunks, field-termination with UniCam connectors and FutureCom™ copper jacks in LANscape Format

Port numbering above and below the ports

Space above the ports can be used for customised labelling

Available in three colours: black, grey and now also with silver front

Housings are available empty (1U or 2U) or preloaded with or without pigtails



Part Number: LANS-148-AE-00R-S0B



Part Number: LANS-148-AE-00R-S0B

LANS Housing, partially loaded, without pigtails, LC Duplex

48 fibres, 1U, single-mode (SM), black



Specifications

General Specifications	
Application	Splicing, preterminated cables, field connectorization
Mounting type	Rack 19"
Mounting Technology	Flush mount
Access type	Front access downward tiltable
Lockable	No
Fibre Category	9 µm SM (OS2)
Product category	Core product / Fastship

Temperature Range	
Operation	-20 °C to 60 °C
Storage	-25 °C to 70 °C

Design - Hardware	
Housing material	High-grade steel
Cable entry type	slotted for cable glands angled
Housing Colour	Black
Height Unit	1U
Fibre count	48
Number of adapters	24
Number of Ports	24
Number of blank modules	0

Mechanical Characteristics	
Dimensions (HxWxD)	44 mm x 483 mm x 213 mm
Weight	2.63 kg

Design Adapter	
Adapter type	LC duplex shuttered
Adapter housing material	Composite
Adapter housing colour	Blue
Insert Material	Ceramic

LANS Housing, partially loaded, without pigtails, LC Duplex

48 fibres, 1U, single-mode (SM), black



Design Adapter

Keyed adapter	No
Shuttered adapter	Yes

Ordering Information

Part Number	LANS-148-AE-00R-S0B
Product Description	LANS Housing, partially loaded, without pigtails, 24 LC Duplex shuttered, 1U, blue SM, black
EAN Code	4056418003108

Shipping Information

Units Per Delivery	1/1
Packing dimensions (L x W x H)	530 mm x 360 mm x 60 mm
Shipping Weight	3.43 kg



Corning Optical Communications GmbH & Co. KG · Leipziger Strasse 121 · 10117 Berlin, GERMANY
00 800 2676 4641 · FAX: +49 30 5303 2335 · www.corning.com/opcomm/emea

A complete listing of the trademarks of Corning Optical Communications is available at www.corning.com/opcomm/emea/trademarks. Corning Optical Communications is ISO 9001 and ISO 14001 certified.
© 2017 Corning Optical Communications. All rights reserved.